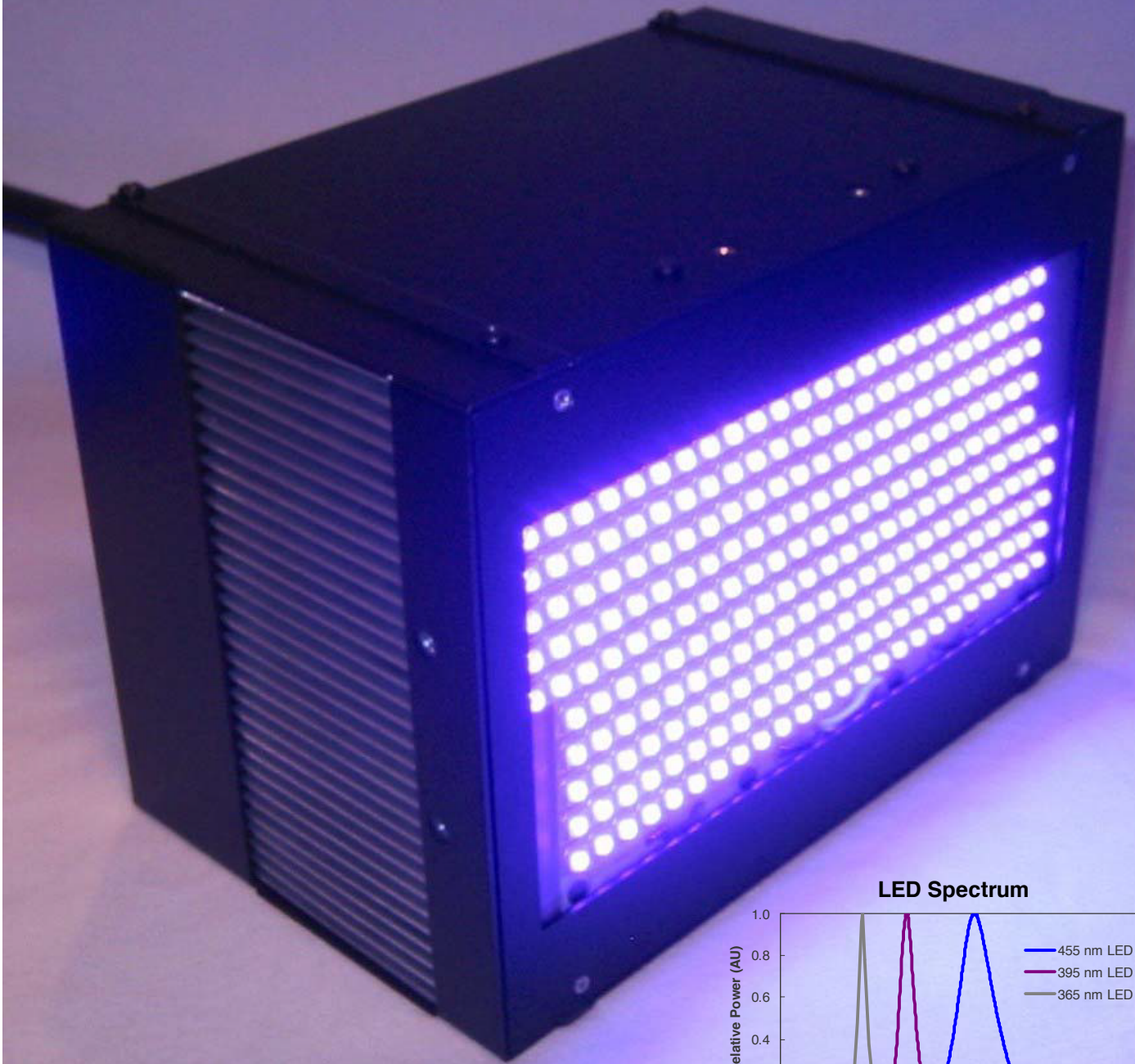
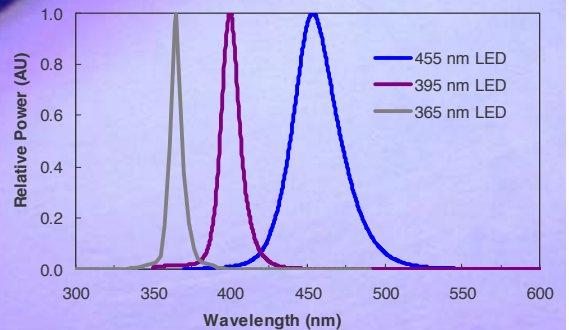


Clearstone UV LED Heads

LTR2-395-240



LED Spectrum



Clearstone Technologies Inc.
625 St. Louis St., Unit 35, Hopkins, MN 55343, USA
Email: info@clearstonetech.com
Web: www.clearstonetech.com
Phone: (612) 824-4846 REV. 08-04-26



Clearstone LTR2-395-240

UV-LED Technology

Characteristics:

Instant Turn On, High Reliability,
Safe Low voltage, Ozone Free,
No Mercury, No Infrared Heating.

Features:

Available Wavelengths: 395, 365, 455 nm
Light Power Continuous operation
(Single tile 395 nm version)
96 W total light power
400 mW/cm² at output window
Mounting on four sides
Indicator light, blue
Compatible with CT2000 Controller
Weight (single tile): 16 lb (7.3 kg)
Dimensions (single tile): W 9.5" x D 7" x H 6.3"
(W 241 mm x D 177 mm x H 160 mm)
Air cooling for continuous operation



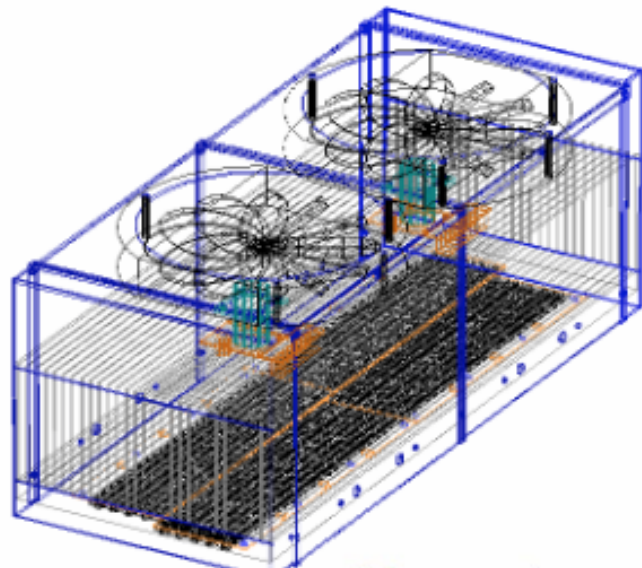
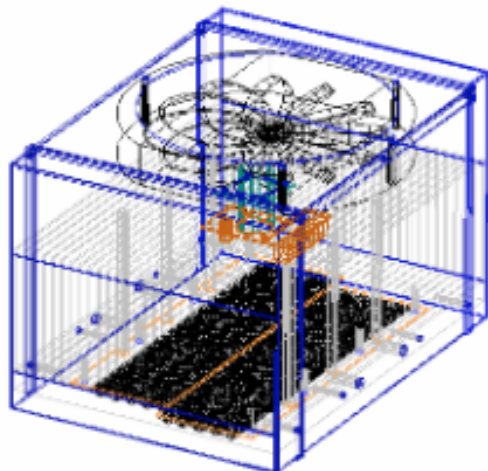
Scalable Design, multiple tiles increase width.

Single LED Tile

Active area: 125 mm x 203 mm

Double Tile

Active area: 125 mm x 406 mm



Clearstone Technologies Inc.
625 St. Louis St., Unit 35, Hopkins, MN 55343, USA
Email: info@clearstonetech.com
Web: www.clearstonetech.com
Phone: (612) 824-4846 REV. 08-04-26

